

AMEGHINIANA

EDITORIAL GUIDELINES

(In effect since January 2020)



2020

CONTENTS

TYPES OF MANUSCRIPT	3
SUBMISSION FILES	5
Text files	5
Files with figures and tables	5
Integrated PDF file	5
Files for Supplementary Online Information	5
Cover letter	5
TEXT ORGANIZATION AND STYLE	6
First page	6
Second page	7
Introduction	8
Style of headings	8
Systematic paleontology	8
Text references to figures	10
References within text	10
Reference list	11
Appendices	12
Figure captions	13
Style, abbreviations, and special symbols	13
FIGURES	15
General considerations	15
Size	15
Format and resolution	15
Color figures	16
Design, scales, and text within figures	16
Example 1	18
Example 2	19
TABLES	20
Example (centered data)	20
Alternatively (left-justified)	21
MANUSCRIPT ONLINE SUBMISSION PROCEDURE	22

TYPES OF MANUSCRIPT

Ameghiniana publishes **six issues per year**. Papers published in Ameghiniana are available through the following ways:

Online version A PDF version of the papers published in Ameghiniana are accessible online via the following websites: **Ameghiniana website**: This website contains a digital version of the entire history of Ameghiniana, which is available only to institutional subscribers and individual members of the Asociación Paleontológica Argentina. **BioOne**: The journal is also distributed via BioOne, a non-profit organization that provides access to multiple institutions of a digital collection of Ameghiniana since the year 2010. Please consult your institution regarding access to this journal via BioOne. Open Access option Authors publishing in Ameghiniana have the option of making their article freely available in all the above-mentioned websites.

Printed version A printed version of the journal sent to institutional subscribers and individual members of the Asociación Paleontológica Argentina.

Other versions Ameghiniana also posts PDFs of the uncorrected accepted manuscripts in a typeset form (i.e., *postprints*) a few days after their acceptance. These posted versions are preliminary and will definitely change during production. These posted versions are removed once the paper is officially published. Manuscripts that contain new names and/or nomenclatural acts are not posted as *postprints*.

Ameghiniana publishes four types of manuscripts, which differ in their scope and length as detailed below:

- Articles: Ameghiniana will cover up to eighteen (18) printed pages. **Printing cost of additional pages must be covered by the authors** ([download template for Articles](#)).
- Paleontological Notes: manuscripts of up to 3000 words ([download templates for Paleontological Note](#)).
- Obituary: one (1) printed page (up to 700 words).
- Book Review: usually one (1) printed page (up to 700 words).

*Note that references, figures, tables, and appendices **count towards the maximum limit of 18 printed pages.***

Ameghiniana no longer publishes Nomenclatural Notes as a separate type of manuscript. Nomenclatural Notes should be sent to the Publicación Electrónica de la Asociación Paleontológica Argentina (PE-APA), which is an electronic-only open access journal without any publication costs. Please visit the webpage of PE-APA (<http://www.peapaleontologica.org.ar/index.php/peapa>) for further information.

Manuscripts must deal with original work and not have been submitted to other publishing media. **The Editorial Board will not consider manuscripts in which the subject-matter does not meet relevance or interest standards.** They should also be self-contained and **NOT** parts of a series (Part 1, Part 2, etc.).

The manuscript will be **rejected without editing** if the Editorial Board considers that:

1. The subject-matter lacks scientific relevance or interest as required by the journal.
2. The Editorial Guidelines are not strictly met.
3. The manuscript has serious deficiencies in written English.

It is assumed that, in the case of multi-authored papers, all the co-authors have endorsed its submission to *Ameghiniana*. All manuscripts will be sent to at least two reviewers determined exclusively by the Editorial Board.

Reviewed manuscripts requiring modifications by the author should be returned within **four (4) months** of notification by the Editorial Board. After this deadline, the system will **automatically withdraw the manuscript** from the editorial process.

SUBMISSION FILES

Text files

All text (including references, figure captions, and appendices) should be formatted in Times New Roman/font-size 12, double-spaced, with **no blank lines** separating the different sections and titles. Text should be left-justified (excepting Tables and Systematic Paleontology, see below).

All pages should be configured to A4 (297 × 210 mm) and be numbered—beginning with the first page—in the lower right corner, including references, figure captions, and appendices. All lines should be numbered consecutively throughout the manuscript.

Appendices to be included in the printed version should be submitted as independent files (following the same format specified for the text).

Files with figures and tables

Figures and tables should be submitted as independent files. The format and specifications for such files are detailed under FIGURES and TABLES, respectively.

Integrated PDF file

A PDF file containing all the material referred to the manuscript (text, figures, tables, and appendices for the printed version) should be uploaded into the online system. This should be uploaded in addition to the text and figure files (see “MANUSCRIPT ONLINE SUBMISSION PROCEDURE” in the last page).

Files for Supplementary Online Information

Authors may upload files for Supplementary Online Information, including data sets, research tools, texts, large tables, and other material not essential for comprehension of the manuscript. There are no restrictions in terms of format but add self-explanatory caption to each one.

Cover letter

A cover letter addressed to the Editor-in-chief is required. All cover letters should include the following items:

- 1) Scientific relevance of the manuscript
- 2) Length of the manuscript, number of figures, tables, appendices, and Supplementary Online Information files.
- 3) A justification of any exception to be considered, such as manuscript length or conflict of interest statement.
- 4) Authors are encouraged to provide a list of at least five (5) potential reviewers for the manuscript including name and email.

TEXT ORGANIZATION AND STYLE

Two template files (MS-Word .doc files) with all the formatting details for Articles and Paleontological Notes can be found at [Ameghiniana Submissions](#)

Generally, manuscripts will be organized sequentially as follows: title, name and affiliation of authors, abstract, key words, introduction, geological setting, material and methods, results or description, discussion, conclusions, acknowledgments, references, appendices, figure captions. American spelling is suggested, even though if you choose British spelling please do it throughout the manuscript avoiding mixtures.

First page (*see templates*)

1. **TITLE.** It should be written in **UPPER CASE** boldface and left-justified. The title should be short, informative and include the studied groups. It should also include stratigraphic occurrence and geographic location, if appropriate. Do not include new names of taxa. Please do not include author names and dates of taxa.
2. **TITLE IN SPANISH.** If you are not able to generate the title in Spanish, the Editorial Team will do that for you.
3. **NAMES OF AUTHORS,** in capital letters and left-justified.
4. Address of authors (including institutional affiliations, postal code city, country, and e-mail), left-justified. Do not translate original non-English affiliations (Universidad, Facultad, Museo, etc.) into English.
5. Total number of pages (text + references), figures, tables, etc., left-justified.
6. Proposed header; maximum six words using up to 60 characters including spaces, left justified. Example: PEREZ *ET AL.*: FOSSIL PLANTS FROM PERU
7. Short Description: Please add here a short description of your paper in maximum 20 words. This will appear in the cover page of other papers in the same issue, left-justified.
8. Corresponding author, left-justified.

Second page (*see templates*)

It should contain the **Abstract** in English and the **Resumen** in Spanish (except Paleontological Notes, see below). The length of the Abstract is up to 250 words, in a single paragraph, left-justified. Do **not** include references nor authorship of taxa, but **do** include new taxa (if applicable) and main results and conclusions.

For English-speaking authors who are not proficient in Spanish, the Resumen and Palabras clave can be produced editorially upon acceptance of the manuscript.

Paleontological Notes do not contain an **Abstract** in the printed version. However, a short abstract of not more than 100 words should be uploaded in the appropriate field during online submission (see “MANUSCRIPT ONLINE SUBMISSION PROCEDURE” in the last page).

Layout of the second page should be as follows:

- 1- **Abstract.** Text in one paragraph.
- 2- **Key words.** Not more than eight key words, each separated by a period.
- 3- **Resumen.** TITLE TRANSLATED INTO SPANISH, IN UPPER CASE. Text in one paragraph.
- 4- **Palabras clave.** Not more than eight key words, each separated by a period.

Note that Paleontological Notes **also** require Key words.

Names and authorship of taxa. Throughout the manuscript, when generic or specific taxa are mentioned for the first time they should not be abbreviated. The citation of author names and dates of all mentioned taxa in the Systematic Paleontology section is **mandatory**. The citation of author names and dates in other parts of the manuscript (*i.e.*, Introduction, Discussion) is advisable, but *not mandatory*—make sure to check with the corresponding Code of Nomenclature and be consistent throughout the manuscript. All in text citations must be included in the reference list.

The rest of the manuscript should begin on the third page with the Introduction and the following sections:

Introduction (see templates)

This section carries no heading or indentation. The entire subject of the first sentence or the first four-to-five words should be in SMALL UPPER CASE. For example:

THE FAMILY CHAPERIIDAE has an almost worldwide

THE EARLY CRETACEOUS FAUNA from the Paja Formation [...]

Use the last part of the introduction to list institutional, anatomical and other relevant lists of abbreviations, with their own separate tertiary heading using **boldface** for each one.

Institutional abbreviations. **ACRON**, Institution name, City, Country; **ACRON**, Institution name, City, Country. Do not translate original non-English institutional names into English.

Anatomical abbreviations. **a**, abone; **b**, bbone; **bc**, bcbone.

Style of headings (*see templates*)

Three heading grades will apply, as follows.

- Grade 1 (the most inclusive) will be in **UPPER CASE** boldface and left-justified.
- Grade 2 will be in **boldface**, left-justified, with the text beginning on the following line.
- Grade 3 will also be in **boldface** and left-justified, ending in a period (period also in **boldface**); text follows on the same line.
- The use of italics in any heading is reserved *only* for genus/species names, *e.g.*, **AUS** or **Aus**.

Systematic Paleontology (*see templates*)

The Systematic Paleontology section should begin with a title (Grade 1 heading **SYSTEMATIC PALEONTOLOGY**), **but centered**. Citation of authorship of taxa is mandatory in this section and must be included in the reference list.

Genera should be in **bold italics** and also centered, beginning with an upper case letter, in all cases indicating rank (*e.g.*, Genus **Aus** Author, 1930). Each genus listed in the Systematic Paleontology section must be followed by an indication (left-justified) of the type species (including year and author [this citation should also be cited in the references]); additional data such as stratigraphic and geographic ranges of type species and type of designation can be included here. Always follow the appropriate Code on how to cite a type species (*e.g.*, in the ICZN the type species is recommended to be cited in its original combination, Rec. 67B).

Specific names, as for genera but all in *lower case*. Reference to Figures should be immediately below taxon name and centered. All species described should be accompanied by an illustration.

Synonymy lists (if any) should follow in the next line and left aligned. Avoid long synonymy lists, citing only those considered important because they include illustrated material or nomenclatural changes. See Matthews (1973; *Palaeontology*, 16(4), 713–719) and Bengtson (1988; *Palaeontology*, 31(1), 223–227) for suitable layouts of synonymy lists and use of open nomenclature.

See examples below (*see also templates*)

-Example citing Linnean ranks:

SYSTEMATIC PALEONTOLOGY

Superfamily AOIDEA Author, year

Family AIDAE Author, year

Subfamily AINAE Author, year

Genus *Aus* Author, year

Type species. *Aus species* Author, year. Short statement on its temporal/geographic distribution.

Aus bus sp. nov.

Figure 1.1–1.5

* synonymy list.

This should be followed by some or all of the following sections (in **Grade 3** heading style): **Derivation of name, Diagnosis, Type material, Referred material, Geographic occurrence, Stratigraphic occurrence,** and **Description** (when appropriate). Please use a separate section for description of elements with a Grade 1 heading (i.e., **DESCRIPTION**) in case you have to describe many elements or specimens. Otherwise, you could insert the description as another Grade 3 heading in the Systematic Paleontology section.

Please bear in mind that following recommendations by the ICZN and ICN, *all* material studied—type material, other described or illustrated material, and comparative reference material—should be registered and housed in an appropriate institution having appropriate facilities and staff to ensure permanent preservation of the material and its availability for future study. Institutional accession (catalog) numbers should be cited in the manuscript.

-Example not citing Linnean ranks (except Genus):

SYSTEMATIC PALEONTOLOGY

AOIDEA Author, year

AIDAE Author, year

AINAE Author, year

Genus *Aus* Author, year

Type species. *Austspecies* Author, year. Short statement on its temporal/geographic distribution

Aus species Author, year

Figures 2–4 or Figure 2.1–2.7

This should be followed by several sections (in **Grade 3** heading style), including **Derivation of name or Etymology, Type material, Referred material, Diagnosis, Geographic occurrence, Stratigraphic occurrence,** and **Description** (when appropriate).

Text references to figures

Text references to tables and figures in the manuscript should be written as Figure 1 or Table 1. If they are in brackets, however, they should be abbreviated (Fig. 1 or Tab. 1), (Figs. 1–3, 5), (Fig. 1.1–1.4, 1.7), (Figs. 1.1–1.7, 2–3, 5).

If a Figure is referred to concurrently to a Table, separate with a semicolon (Fig .1; Tab. 1).

Text references to figures, tables, etc. in other publications should be cited as figure 1 or table 1 (fig. 1 or tab. 1).

IMPORTANT: Figures should be cited in **continuous** and **ascending order** in the text. In systematic works, the order of figures **should strictly follow the order of taxa** in the Systematic Paleontology section. **All figures must be cited in the text.**

References within text

For order and punctuation, authors are referred to the examples given below and to <https://apastyle.apa.org/> for further information.

Examples in parenthetical form:

- (Smith, 1995)
- (Smith, 1995, 1996; Adams, 2001; Smith *et al.*, 2012)
- (Smith & Evans, 1997)
- (Smith *et al.*, 1999)
- (Smith, 1995, 2000; Smith *et al.*, 1999)
- (Smith, 1995: 35)
- (Smith, 1995, fig. 15A, tab. 1)
- (Smith, 1995a)
- (Smith, 1995a, 1995b)

Examples in narrative form:

- Smith (1995, 1996), Adams (2001), and Smith *et al.* (2012) described ...
- Smith and Evans (1997)
- Smith and Evans (1997, 2000) and Adams and Smith (2012)
- Smith (1995: 35)

Smith (1995, fig. 15A, tab. 1)

Smith (1995a, 1995b)

Reference list

The Reference list should include all references mentioned in the text, figures, and tables.

Citations to abstracts and unpublished theses or reports should be avoided whenever possible.

Unpublished or submitted papers cannot be included as references.

Publications in press that are available online and those that are available only online should include doi. If the paper is included in a paginated volume, the citation of the doi is not necessary.

See the examples below (see also templates) and *please respect the use of hanging indents for references and the use of en-dash (–) for page ranges*.

The references should be formatted in APA style (7th ed.). Please visit <https://apastyle.apa.org/> for further information. Note that this style could also be generated automatically with various open-access online tools, in most text processors, as well as with specific software. Please include the doi only in the online-only articles or those that are in press.

Order of the references in the list, when the first author is the same:

List first the single-author references, arranged in chronological order (from oldest to newest):

Smith, J. A. (1999).

Smith, J. A. (2001).

Smith, J. A. (2005a).

Smith, J. A. (2005b).

References that have the same first author and different second and/or third authors are arranged alphabetically by the last name of the second author, or the last name of the third if the first and second authors are the same, etc.

Smith, J. A., Kerr, A. B., & Owen, R. (2000).

Smith, J. A., & Owen, R. (1999)

JOURNALS

Archangelsky, S., Vázquez, M. S., & Césari, S. N. (in press). Palinofloras cisuralianas en el subsuelo del noreste de la provincia de La Pampa. *Ameghiniana*.
<https://doi:10.5710/AMGH.17.07.2014.2757>

Gaetano, L. C., Abdala, F., & Govender, R. (2017). The postcranial skeleton of the Lower Jurassic *Tritylodonlongaevus* from southern Africa. *Ameghiniana*, 54(1), 1–36.

Nesbitt, S., & Desojo, J. B. (2017). The osteology and phylogenetic position of *Luperosuchusfractus* (Archosauria: Loricata) from the latest Middle Triassic or earliest Late Triassic of Argentina. *Ameghiniana*, 54(3), 261–283.

Sereno, P. C. (2017). Early Cretaceous ornithomimosaur (Dinosauria: Coelurosauria) from Africa. *Ameghiniana*, 54(5), 576–617.

Yang, X-K., & Zhang, Z-Q. (2013). [3D geometric morphometrics of some ursid skull]. *Vertebrata Palasiatica*, 51(1), 331–341. [in Chinese]

MEETINGS AND CONGRESSES

Bertels, A. (1978). Estratigrafía y foraminíferos (Protozoa) bentónicos de la Formación Monte León (Oligoceno) en su área tipo, provincia de Santa Cruz, República Argentina. *Actas de 2º Congreso Argentino de Paleontología y Bioestratigrafía y 1er Congreso Latinoamericano de Paleontología* (pp. 213–273). Buenos Aires.

Casadío, S., Parras, A., Marensi, S. A., & Griffin, M. (2001). Edades $^{87}\text{Sr}/^{86}\text{Sr}$ de *Crassostrea? hatcheri* (Ortmann) – Bivalvia, Ostreoidea – en el “Patagoniano” de Santa Cruz, Argentina. *Ameghiniana, Suplemento Resúmenes*, 38(4), 30R.

BOOKS AND BOOK CHAPTERS

Be, J. L. (1984). Late Cretaceous floral provinces. In P. Brenchley (Ed.). *Fossils and climate* (pp. 127–164). Wiley Editors.

Darwin, C. R. (1846). *Geological observations on South America, being the third part of the geology of the voyage of the Beagle*. Smith, Elder & Co.

Re, G. G., Bellosi, E. S., Heizler, M., Vilas, J. F., Madden, R. H., Carlini, A. A., Kay, R. F., & Vucetich, M. G. (2010). A geochronology for the Sarmiento Formation at Gran Barranca. In R. H. Madden, A. A. Carlini, M. G. Vucetich & R. F. Kay (Eds.). *The Paleontology of Gran Barranca* (pp. 46–58). Cambridge University.

ELECTRONIC PUBLICATIONS

Be, J. L. (1996). Coniferae. In D. Maddison & W. Maddison (Eds.). *Tree of life*. Retrieved September 20, 2019, from <http://www.nmnh.org> [If a retrieval date is needed. If not, please add only the URL]

THESES AND UNPUBLISHED MATERIAL

Be, J. L., Ae, N. S., & Zeta, R.B. (1975). *Estratigrafía de la región del río Genoa, provincia del Chubut* (Report of the Dirección de Minas y Geología, Buenos Aires). Available from / Retrieved from [add link if available]

Rodríguez, D. L. (2007). *Equinoideos mesozoicos de las cuencas andinas del centro-oeste de Argentina* (Tesis Doctoral, Facultad de Ciencias Exactas y Naturales, Universidad de Buenos Aires, Buenos Aires). Available from / Retrieved from [add link if available]

Appendices

Appendices should include only information that is necessary to appear in the final galley, but is too condensed to be included in the running text of the manuscript. Appendices **could**

include figures as well. However, note that some kinds of information (*e.g.*, lists and tables of measurements, matrices etc.) should be preferably included as supplementary online information and not as an Appendix. In any case, the Appendices should follow the same guidelines as the rest of the manuscript and be numbered. **Appendices should be submitted as separate files. Appendices count towards the maximum word limit.**

Figure captions

Figure captions should be typed after the Reference list. All abbreviations and symbols (exc. the institutional abbreviations) should be explained in the captions (and/or at the end of introductory section) and depicted in **boldface**. Include here accreditation for any copyrighted content, such as satellite image.

Please see the following examples (*see templates*):

Figure 1. **1**, Paleogeographic boundary of the Neuquén Basin during the late Valanginian showing fossil localities mentioned in the text; **2**, geologic map showing the studied sections: **AM**, Agrio del Medio; **BA**, Bajada del Agrio; **BV**, Bajada Vieja.

Figure 9. **1–6**, *Chartronella spiralis* sp. nov., MPEF-PI 3590; **1–3**, lateral view; **4**, basal and apertural view; **5–6**, last whorl ornamentation detail. **7–10**, *Lewisiella?* sp., MPEF-PI 4006; **7–8**, lateral view; **9–10**, basal and apertural view. Scale bar equals 5 mm.

Approximate placement of figures and tables should be included in the text.

Style, abbreviations, and special symbols

Words in other languages. Words in languages other than English, including abbreviations (such as *e.g.*, or *i.e.*), should be typed in *italics*. Exceptions are notations used in open nomenclature such as *cf.* and *aff.*, in addition to (?), whenever they are associated to taxa of the genus group or lower rank.

Scientific names. Genus and species names must be *italicized*, except when the text in which they are included is also in italics (in this case they should be typed in normal font).

Stratigraphy. Time scales should conform to the latest updates of the various Commissions of the IUGS. Series or epochs of the time scale should start with capital letters if have been formally recognized in the International Chronostratigraphic Chart, otherwise they should not start with a capital letter (*e.g.*, Upper Cretaceous but lower Paleocene).

Geographic coordinates. Geographic coordinates (latitude and longitude) can be in the form of: degrees, minutes, and seconds (*e.g.*, 38° 31' 21" S; 70° 09' 50" W) or degrees and decimal minutes (*e.g.*, 38° 31.48' S; 70° 15.27' W).

Toponyms and geographic features. Please do not translate the names of the toponyms in English, but rather use the original name without changes (*e.g.*, use Río Negro or Negro River

but not Black River) or the official transliterated version with Latin characters (*i.e.*, for toponyms in non-Latin languages). This rule applies also to other names that might use toponyms, *e.g.*, names of formations and other stratigraphic units (La Colonia Formation instead of Colony Formation). Geographic features (*e.g.*, Isla, Island, Cabo, Cape, etc) can be used in Spanish or English, but please be consistent throughout the manuscript avoiding mixtures.

Abbreviations. The metric decimal system should be used for all measurements, using the notations accepted by SI (www.bipm.org). Fractions should be expressed as decimals (*e.g.*, 0.25 instead of ¼), separating the whole number from the decimals with a period while the comma is not needed for thousands.

Abbreviations should end in a period, except those referring to measurements and distances, such as kg, m, km, µm, and those formed by two or more upper case letters, such as USA, OAS, UN, etc.

Abbreviations for thousands and millions of years ago are **ka** and **Ma** respectively, as recommended by IUGS. However, for Pleistocene and Holocene ages, these will be specified as ¹⁴C years BP (for radiocarbon ages) and cal. years BP (for calibrated ages).

All other abbreviations (including institutional acronyms) should be explained (in **boldface**, see [templates](#)) under the appropriate title at the end of the Introduction (usually institutional acronyms and anatomical abbreviations; please see above in the section about Introduction), or within Material and Methods between parentheses in the running text (usually abbreviations related to the methods; *e.g.*, [...] the most-parsimonious trees (**MPT**) were calculated [...]).

Italics and Punctuation. Please make sure to italicize the punctuation as well, when the punctuation is part of the word that becomes punctuated. When the punctuation symbol is not part of the word, but part of the text, does not have to be italicized.

Examples:

i.e., e.g., et al., [in all those cases the period is in italics, the comma not]

H. sapiens, [As the word *Homo* that is punctuated is italicized, the period needs to be in italics as well. The comma does not need italics]

'*Te.*' *graeca*, [again, the period of the punctuated genus name is in italics, but the quotation marks not; the quotation marks are not part of the italicized word, but part of the punctuation of the text. (*Homo sapiens*) [the parentheses do not go in italics]

Binford, L.R. 1981. *Bones: Ancient men and modern myths*. Academic Press, New York, 319 p. [in the references, the period after the title of a book should not be in italics]

Hyphens, dashes. Hyphens and en dashes are used for different purposes. The hyphen (-) is used between parts of a compound word, as in (*e.g.*, well-preserved, basal-most taxon). Hyphens are also used in collection acronyms (*e.g.*, MACN-A). The en dash (–) is used for a range of values. This should be used for numeric ranges of figures or pages (*e.g.*, p. 56–98, Figs. 7–9) as well as for periods of time (*e.g.*, Triassic–Jurassic). The latter case should be used only when the entire lapse of time is being referred (from the beginning of the Triassic to the end of the Jurassic). Depending on the context, the authors might want to replace the comma, parentheses or colons with the em dash (—). In those cases (*e.g.*, the description of the skull of *Genus*

species—the most complete known up to now—is described herein). Please make sure that **no spaces** are **before or after** the hyphen or the dash.

Apostrophe. Please make sure the proper symbol of apostrophe is used (*e.g.*, people’s), and not the symbol for the accent in languages. This is common to confuse because is usually the same key in the English and Spanish keyboard, but they print quite different.

Special symbols. Always use the appropriate symbol. For example, a common mistake is to use the letter “o” as a superscript instead of the proper symbol for the ordinal indicator, *i.e.*, 90_o instead of 90°. Note the difference.

Boundaries. Boundaries between stratigraphic units should be noted by (/). For example, use Maastrichtian/Paleogene instead of Maastrichtian–Paleogene (see above).

Equations. Equations should be included in a separate line, and centered. If more than one is included in the text, number them consecutively with Arabic numerals, *e.g.*, Equation 1 or (Eq. 1).

$$a_2 + b_2 = c_2 \text{ (Eq. 1)}$$

ZooBank. The Editorial Team of *Ameghiniana* assumes the responsibility of registering all new zoological names and the works that contain them in the Zoobank. This information will appear in the final galley. In the case that you have registered them, please notify the editorial team.

FIGURES

General considerations

The Editorial Board of *Ameghiniana* strives for uniformity and high-quality standards of all published figures and tables. Please follow instructions carefully in order to avoid unnecessary delays in the editorial process.

Size

Figures and tables should be prepared using either one column (width **82 mm**) or two columns (width **170 mm**). **Please note that these are the only widths allowed.** In both cases, the maximum height allowed is **230 mm**. Please do not leave white margins outside the figure.

Format and resolution

All illustrations should be submitted as **TIFF** files meeting the following requirements:

- Resolution of **300 dpi**. **Please remember that they should be submitted in their final publication size.**

- Please take care to submit files of the best quality possible, using the appropriate software and export techniques. The most common issues arise when a bitmap software (*e.g.*, Adobe Photoshop or similar) is used to add vector elements in the figure (*e.g.*, lines, letters, numbers), without following the proper techniques. In those cases and even if the figures are submitted in the appropriate resolution, the quality of the vector elements is often not enough.
- **TIFF** files must be compressed using **LZW** compression.
- Color figures or combined color/text should be in **CMYK** color format but grayscale figures should be in **Grayscale** format.

Color figures

Publication costs of color figures in the printed version should be paid by the authors. For current costs and payment details, please contact secretaria@apaleontologica.org.ar. Color figures in the printed version will also be published in the online version.

Authors may choose to publish color figures only in the online version free of costs. In this case, these figures should be submitted in two versions (*i.e.*, color and gray-scale). **Ameghiniana will not generate new gray-scale versions of color figures. Mere conversion of color to gray-scale does NOT guarantee the quality of the resulting image.**

Design, scales, and text within figures

Numeration. Figures should be numbered consecutively in accordance with their sequential mention in the text.

Figures with more than one component. In figures with more than one individual component, these should be identified with **Arabic numbers**, included in the figure. Typeface used should be a **Sans Serif Font (similar to Arial or Helvetica) size 10 bold** and should be placed at the upper left corner of the figure and enclosed in a white circle (see example below).

Separation between figures should have a width of one to two millimeters. This should be constant throughout the figure and in all the figures of the same style throughout the manuscript (see example below). Please do not leave white margins outside the figure.

Whenever possible, the various components of the figure should be numbered consecutively from the left to the right and from the top to the bottom.

If several photographs are displayed in the same figure, they should all have similar tone and contrast.

Background. If it is necessary to eliminate or modify the background around the specimen, this should be done carefully in order to preserve the edges. Background should be either full black (100%) or white. An example of full black tone is achieved in the RGB channel as follows: R: 0, G: 0, B: 0. A full white is achieved in the RGB channel as follows: R: 255, G: 255, B: 255. During the conversion to CMYK make sure to print black as Rich Black.

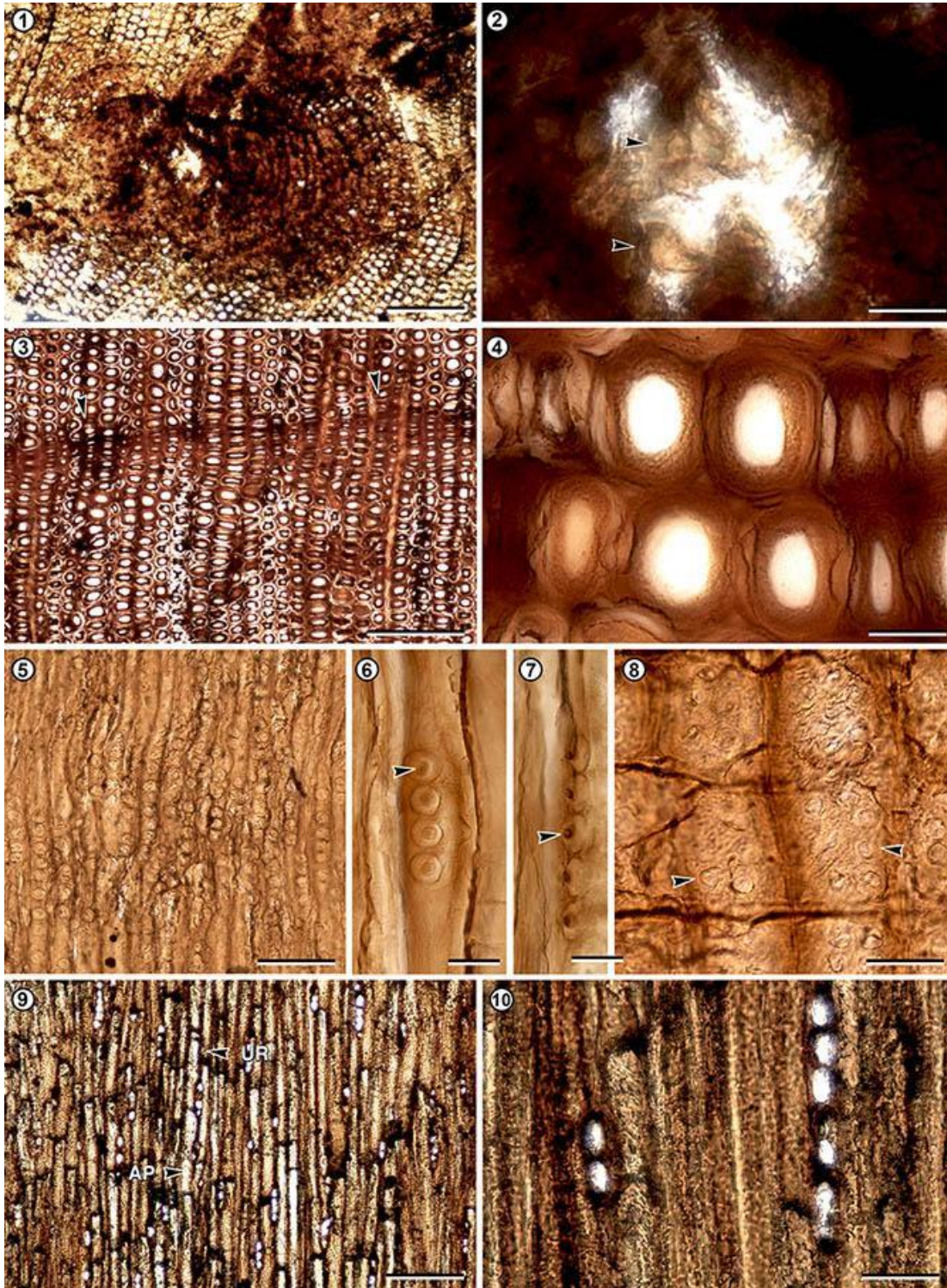
Scales and lines. Should be placed *within* the figures and if possible at the bottom right corner (see example below). The numeric value of the graphic scale must **not** be included in the figure itself, but in the figure captions (except in the maps). Graphic scales in the illustrations should be of the same style and size and consistent throughout the manuscript. Use also consistent widths for arrows and other indications in the figures.

Text within figures. Text included in the figure should be in a **Sans Serif Font** (similar to Arial or Helvetica) and not smaller than 6 pt.

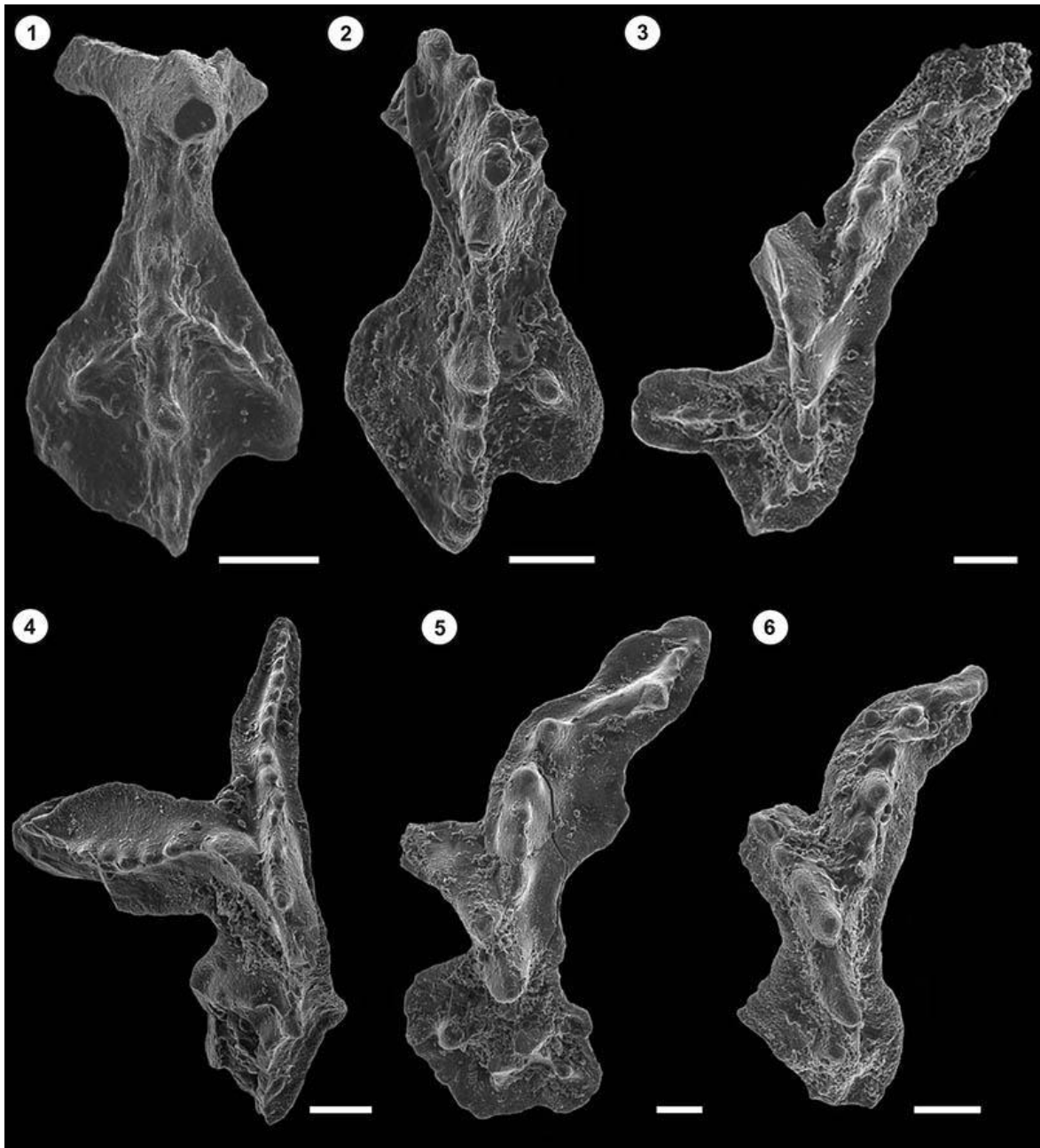
Maps. Must include latitude and longitude values on the map frame, arrow indicating geographic North, and graphic scale.

IMPORTANT: Any copyrighted image **must** be properly accredited in the caption. A common mistake is to credit satellite images from Google Earth as “source: Google Earth”. Google Earth is the software that allows access to these images, whereas the source of the image appears on the bottom (*e.g.*, Landsat/Copernicus 2018). The proper citation should include both types of information (*e.g.*, image from Landsat/Copernicus 2018; Google Earth, accessed December 2019).

Example 1. Example showing divisions between images



Example 2. In composite figures in which the background of each figure is cut out, there should be no divisions between images.



TABLES

To avoid layout errors and delays in the editorial process, construct tables according to the following instructions:

- 1) They should be submitted as separate files in **DOC** or **DOCX** format.
- 2) The title in boldface and left-justified. The word **TABLE** also in UPPER CASE.
- 3) Immediately above the title insert a ½ pt double line.
- 4) Immediately below the title insert a ½ pt single line.
- 5) Tables may contain subtitles, left-justified or centered depending on the type of data (see examples below), and followed by a ½ pt single line.
- 6) Lines with data in a table will **not** be separated by horizontal lines.
- 7) Text with data could be left-justified or centered depending on the type of data (see examples below).
- 8) Footnotes may be added after the last data line, separated from it by a horizontal ½ pt single line.
- 9) At the end of the table, there should be a ½ pt double line.
- 10) Do not include vertical lines.
- 11) Text font for the tables is always between size 8 to 12.
- 12) Generic or specific names are to be in ***Bold italic*** font.

Example (centered data):

TABLE 1. Example of Table. Title and explanation					
	Subtitle A of	Subtitle B of	Subtitle C of	Subtitle M of	Subtitle N of
	Table 1	Table 1	Table 1	Table 1	Table 1
<i>Bexus</i> Y	Content X	Content X	Content X	Content X	Content X
<i>Axus</i> Z	Content a	Content X	222	116.8	900.6
<i>Cexus</i> W	Content a	Content X	333	116.9	1,000
<i>Dexus</i> X	Content a	Content X	444	200.8	1,200

Additional clarifications are left-justified.

Alternatively (left-justified):

TABLE 1. Example of Table. Title and explanation					
	Subtitle A of	Subtitle B of	Subtitle C of	Subtitle M of	Subtitle N of
	Table 1	Table 1	Table 1	Table 1	Table 1
<i>Bexus Y</i>	Content X	Content X	Content X	Content X	Content X
<i>Axus Z</i>	Content a	Content X	222	116.8	900.6
<i>Cexus W</i>	Content a	Content X	333	116.9	1,000
<i>Dexus X</i>	Content a	Content X	444	200.8	1,200
Additional clarifications are left-justified.					

MANUSCRIPT ONLINE SUBMISSION PROCEDURE

All manuscripts should be submitted electronically via the journal's webpage (www.ameghiniana.org.ar). There are Five Steps through which the files are uploaded in the online system:

STEP 1 (STARTING THE SUBMISSION)

- a) Select the type of manuscript
- b) Verify that your manuscript meets the requirements of the Submission Checklist by checking the appropriate boxes.

STEP 2 (UPLOAD SUBMISSION)

- a) Upload the integrated PDF file that includes the text (with references and figure captions) and all figures, tables, and appendices for the printed version.

STEP 3 (ENTER METADATA)

- a) Complete the appropriate fields, including author data, title, abstract, and key words.
- b) Paleontological Notes do not contain an Abstract in the printed version. However, a short abstract of not more than 100 words should be uploaded during Step 3 in the appropriate field when completing the metadata.

STEP 4 (UPLOAD SUPPLEMENTARY FILES)

- a) Upload in this step the following files:
 - Manuscript text, including figure captions (in .DOC or .DOCX format).
 - A separate file for each figure (in .TIFF format).
 - A separate file for each table (in .DOC or .DOCX format).
 - A PDF file containing all the material referred to the manuscript (text, figures, tables, and appendices for the printed version)
 - Appendices for the printed version (in .DOC or .DOCX format).
 - Files for Supplementary Online Information (these will not be included in the printed version but will be available in the webpage of the published article at www.ameghiniana.org.ar). There are no format restrictions for these files.
 - Cover letter (in PDF, .DOC or .DOCX format).

STEP 5 (CONFIRMING THE SUBMISSION)

- a) Click on “Finish Submission” to submit your article to the Editorial Board.